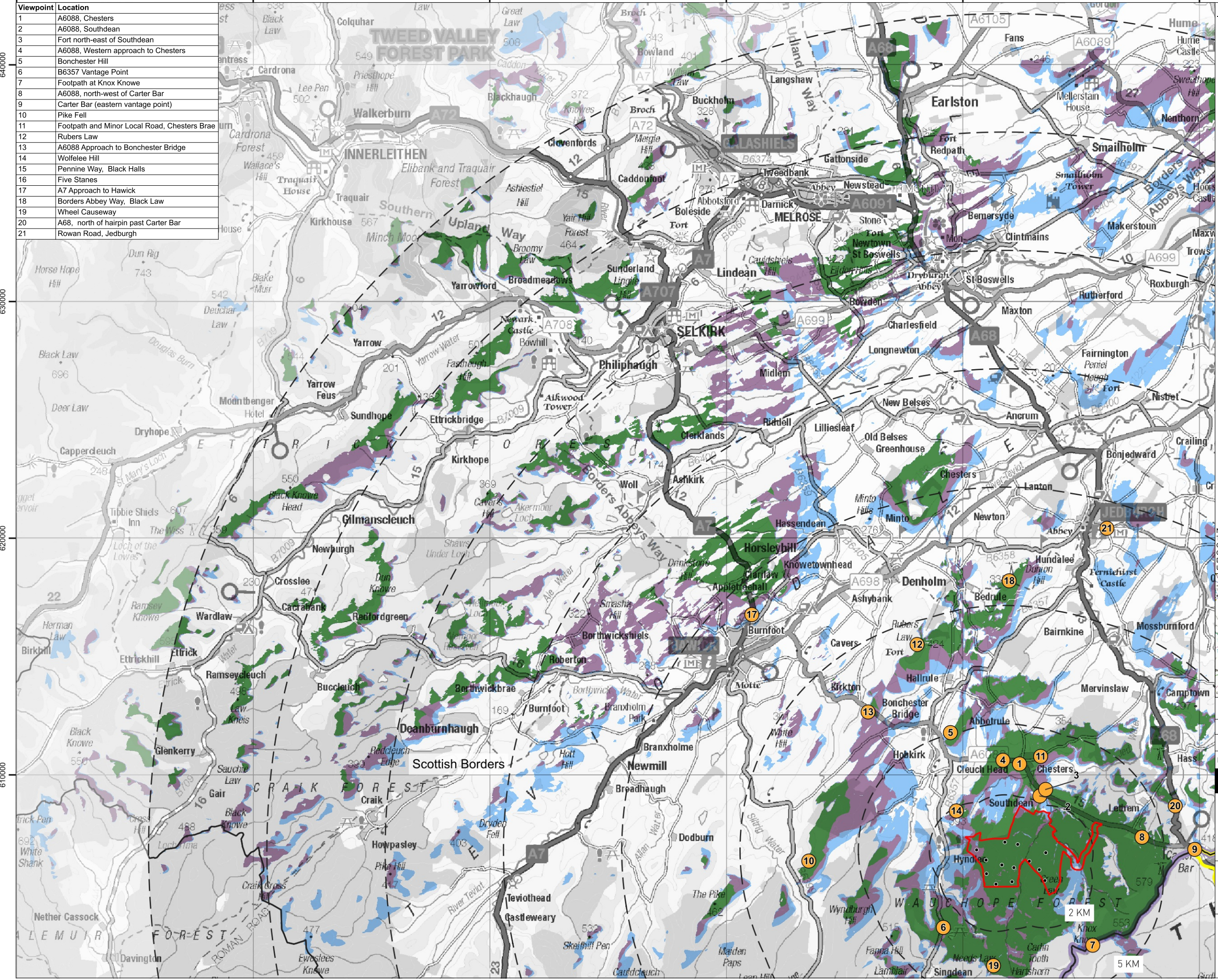


Viewpoint	Location
1	A6088, Chesters
2	A6088, Southdean
3	Fort north-east of Southdean
4	A6088, Western approach to Chesters
5	Bonchester Hill
6	B6357 Vantage Point
7	Footpath at Knox Knowe
8	A6088, north-west of Carter Bar
9	Carter Bar (eastern vantage point)
10	Pike Fell
11	Footpath and Minor Local Road, Chesters Brae
12	Rubers Law
13	A6088 Approach to Bonchester Bridge
14	Wolfelee Hill
15	Pennine Way, Black Halls
16	Five Stanes
17	A7 Approach to Hawick
18	Borders Abbey Way, Black Law
19	Wheel Causeway
20	A68, north of hairpin past Carter Bar
21	Rowan Road, Jedburgh



Legend:

- Application Boundary
- Proposed Turbines
- Study Area 35 km
- Local Authority Boundary
- Northumberland National Park
- Scotland England Border
- LVIA Viewpoint

Lit Turbine Zone of Theoretical Visibility

- 1 to 2 lit turbines visible
- 3 to 4 lit turbines visible
- 5 to 6 lit turbines visible

Notes:
 This map contains data from the following sources:
 Ordnance Survey (2022)
 Coordinate System: British National Grid Projection: Transverse Mercator
 Datum: OSGB 1936
 Units: Metres



Rev	Date	Description	Drn	Chk	App
01	14/11/22	LVIA Issue	DG	DT	-
00	07/09/22	LVIA Draft Issue	DG	DT	-

Millmoor Rig Wind Farm

TITLE:
 Figure 6.32:
 Lit Turbine ZTV to 35 km
 (NW Quadrant) with Viewpoints

0 2.5 5
 Kilometres
 SCALE 1:150,000 @ A3

REV 01