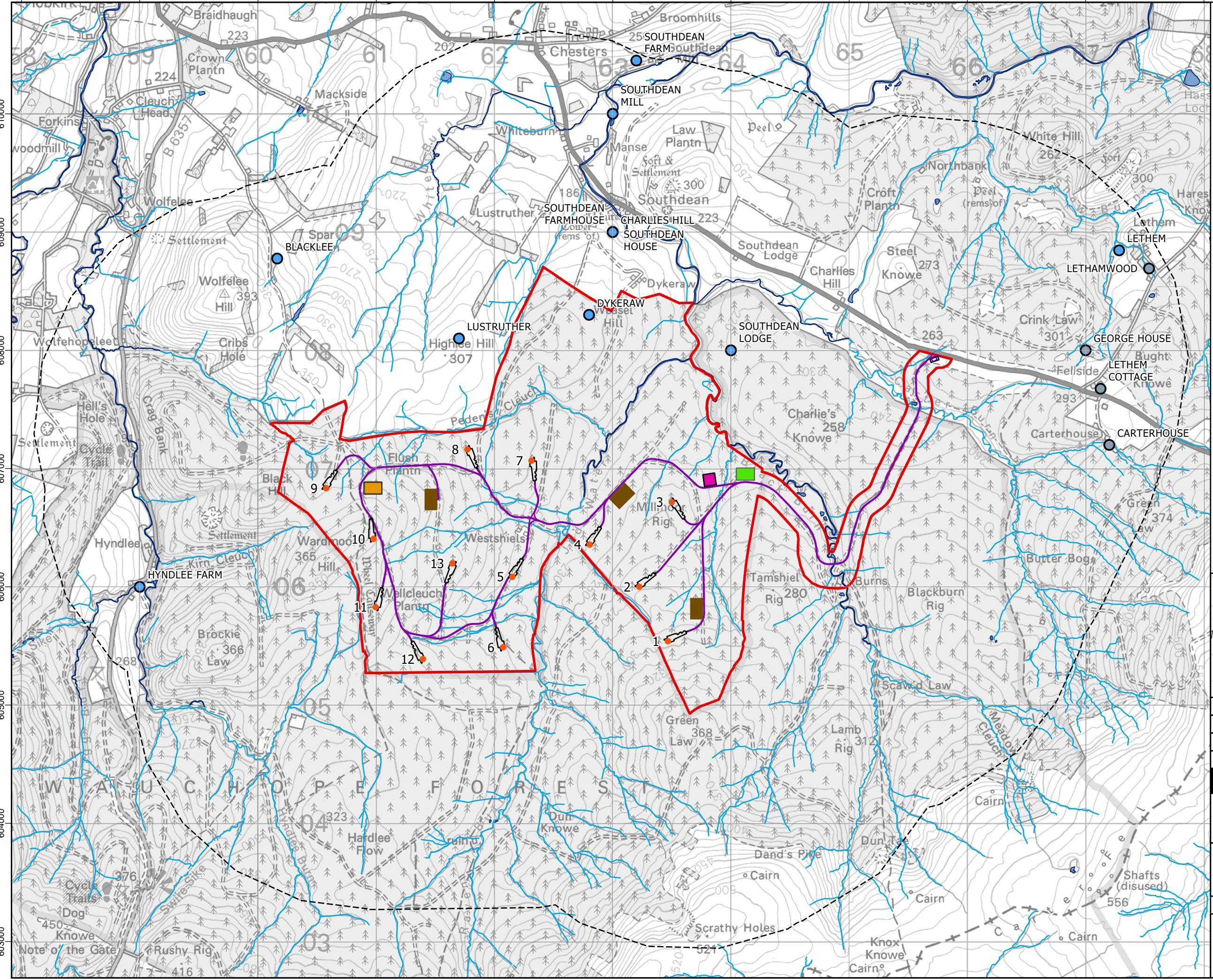


358000 359000 360000 361000 362000 363000 364000 365000 366000 367000 368000



- Legend:**
- Application Boundary
  - Private Water Supply Buffer: 2km
  - Turbine
  - Tracks
  - Hardstands
  - Mobilisation Compound
  - Borrow Pit Search Areas
  - Construction Compound
  - Preferred Substation Option
  - Alternate Substation Option
  - Temporary Turbine Layover Area
  - Waterbody
  - Watercourse
  - Groundwater - Borehole
  - Groundwater - Spring(s)

Coordinate System: British National Grid  
 Projection: Transverse Mercator  
 Datum: OSGB 1936  
 Units: Meter



Rev	Date	Description	Drn	Chk	App
02	30/08/2022	Project Infrastructure Added	TM	AP	RB
01	30/08/2022	Scale Change, Added Watercourses and Waterbodies, Frozen Layout Added.	TM	CI	CI
00	04/08/2021	First Draft	TM	DL	CI

**Millmoor Rig Wind Farm**



TITLE: Figure 10.5:  
Private Water Supplies

ID:P663320\_Figure 10.5 Private Water Supply

